

**HYDROSHOT™**

**SAFETY AND OPERATING MANUAL**  
**ORIGINAL INSTRUCTIONS**

**2 in 1: Portable Power Cleaner/Water Sprayer**  
**WG620E WG620E.X**



## **PRODUCT SAFETY**

### **GENERAL SAFETY WARNINGS**

 **WARNING: Read all safety warnings and all instructions.** *Failure to follow the warnings and instructions may result in electric shock, fire and/or serious injury.*

### **Save all warnings and instructions for future reference.**

- This appliance can be used by persons with reduced physical, sensory or mental capabilities or lack of experience and knowledge if they have been given supervision or instruction concerning use of the appliance in a safe way and understand the hazards involved. Children shall not play with the appliance.
- The appliance is only to be used with the power supply unit provided with the appliance.
- This appliance is not intended for use by persons (including children) with reduced physical, sensory or mental capabilities, or lack of experience and knowledge, unless they have been given supervision or instruction concerning use of the appliance by a person

- responsible for their safety.
- Children should be supervised to ensure that they do not play with the appliance.

### **ADDITIONAL SAFETY WARNINGS**

### **ADDITIONAL SAFETY WARNINGS FOR PORTABLE POWER CLEANER**

1. The liquid must not be directed towards equipment containing electrical components.
2. Remove or disconnect the battery pack after use and before carrying out user maintenance on the appliance.
3. The appliance shall not be left unattended while it is connected to the battery pack.
4. The appliance is not to be used if it has been dropped, if there are visible signs of damage or if it is leaking.
5. Keep the appliance out of reach of children when it is energized.

### **SAFETY WARNINGS FOR BATTERY-OPERATED APPLIANCES**

1. Non-rechargeable batteries are not to be recharged.
2. Rechargeable batteries

are to be removed from the appliance before being charged.

3. Different types of batteries or new and used batteries are not to be mixed.
4. Batteries are to be inserted with the correct polarity.
5. Exhausted batteries are to be removed from the appliance and safely disposed of.
6. If the appliance is to be stored unused for a long period, the batteries should be removed.
7. The supply terminals are not to be short-circuited.

4

## **SAFETY WARNINGS FOR BATTERY PACK**

**a) Do not dismantle, open or shred cells or battery pack.**

**b) Do not short-circuit a battery pack. Do not store battery packs haphazardly in a box or drawer where they may short-circuit each other or be short-circuited by conductive materials.**

When battery pack is not in use, keep it away from other metal objects, like paper clips, coins, keys, nails, screws or other small metal objects, that can

make a connection from one terminal to another. Shorting the battery terminals together may cause burns or a fire.

**c) Do not expose battery pack to heat or fire. Avoid storage in direct sunlight.**

**d) Do not subject battery pack to mechanical shock.**

**e) In the event of battery leaking, do not allow the liquid to come into contact with the skin or eyes. If contact has been made, wash the affected area with copious amounts of water and seek medical advice.**

**f) Keep battery pack clean and dry.**

**g) Wipe the battery pack terminals with a clean dry cloth if they become dirty.**

**h) Battery pack needs to be charged before use. Always refer to this instruction and use the correct charging procedure.**



**i) Do not maintain battery pack on charge when not in use.**












**j) After extended periods of storage, it may be**

**necessary to charge and discharge the battery pack several times to obtain maximum performance.**

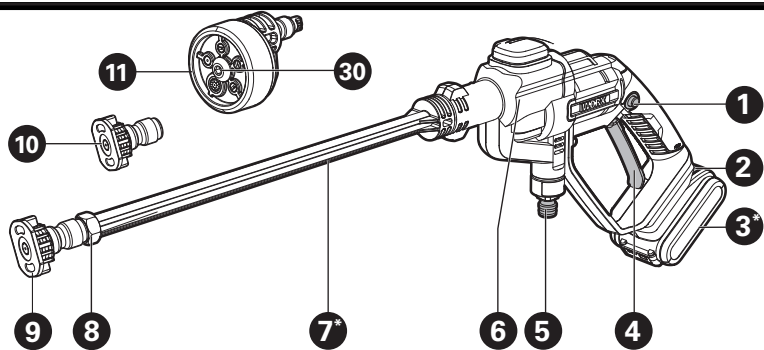
- k) Recharge only with the charger specified by Worx. Do not use any charger other than that specifically provided for use with the equipment.**
- l) Do not use any battery pack which is not designed for use with the equipment.**
- m) Keep battery pack out of the reach of children.**
- n) Retain the original product literature for future reference.**
- o) Remove the battery from the equipment when not in use.**
- p) Dispose of properly.**
- q) Do not mix cells of different manufacture, capacity, size or type within a device.**
- r) Keep the battery away from microwaves and high pressure.**

## SYMBOLS

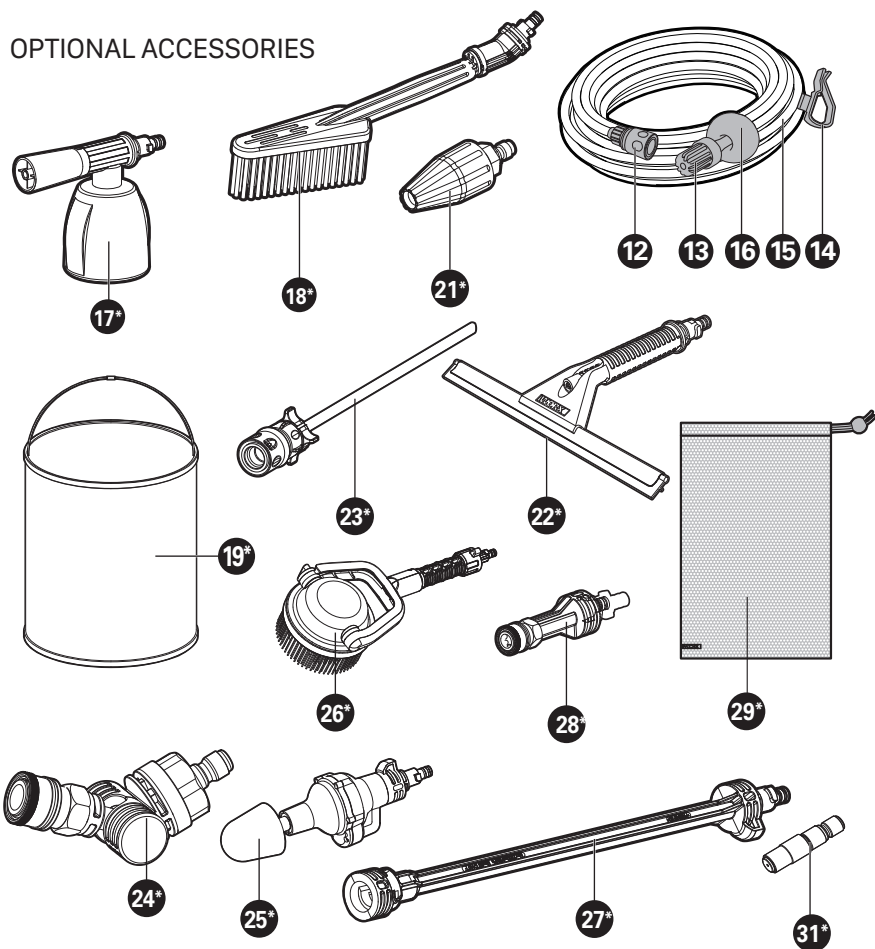
	Warning
	Read operator's manual

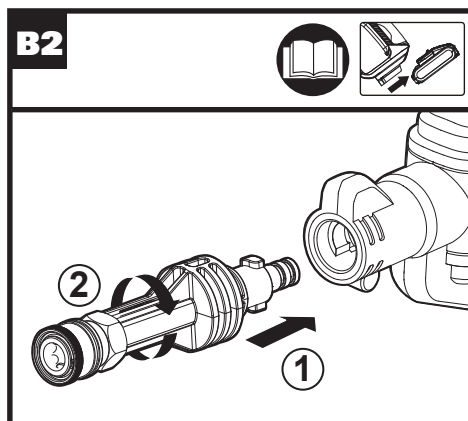
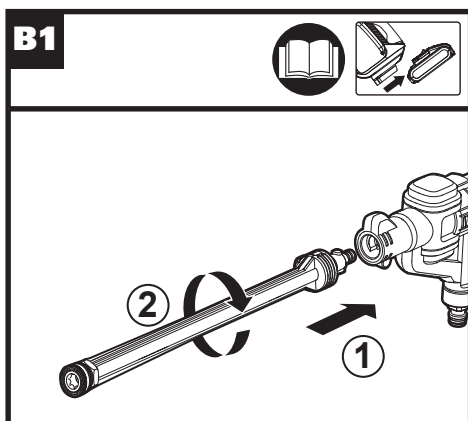
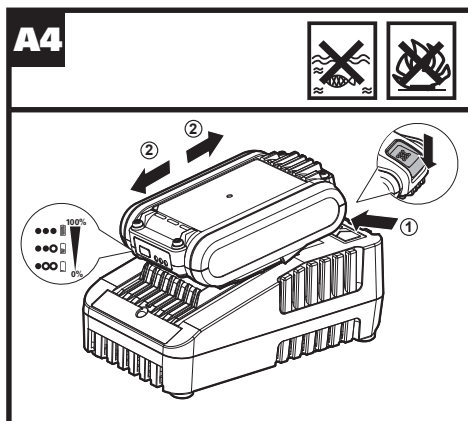
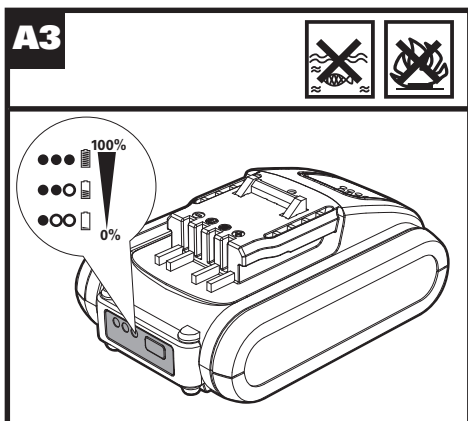
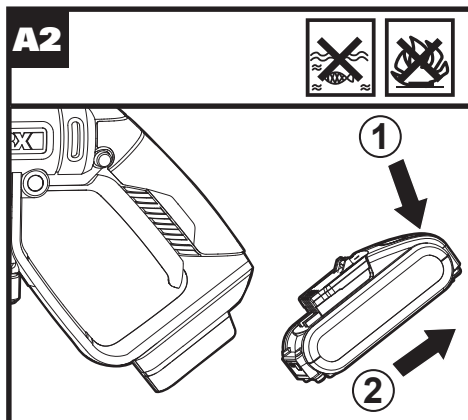
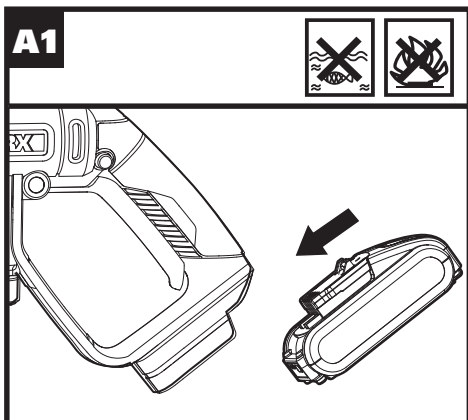
	Waste electrical products must not be disposed of with household waste. Please recycle where facilities exist. Check with your local authorities or retailer for recycling advice.
 Li-Ion 	Li-Ion battery. This product has been marked with a symbol relating to 'separate collection' for all battery packs and battery pack. It will then be recycled or dismantled in order to reduce the impact on the environment. Battery packs can be hazardous for the environment and for human health since they contain hazardous substances.
 Li-Ion 	
	Do not burn
	Batteries may enter water cycle if disposed improperly, which can be hazardous for ecosystem. Do not dispose of waste batteries as unsorted municipal waste.
	Remove battery from the socket before carrying out any adjustment, servicing or maintenance.
	Unlock
	Lock
	RCM marking

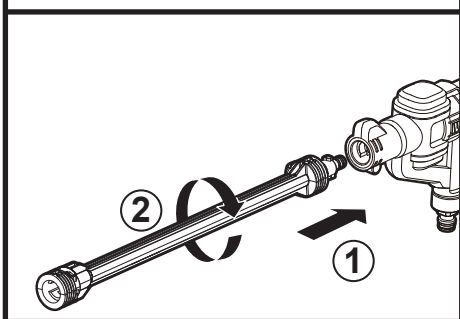
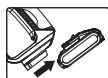
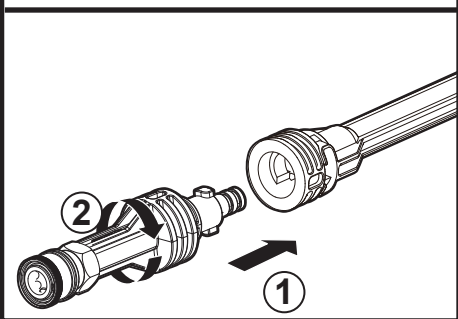
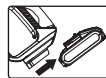
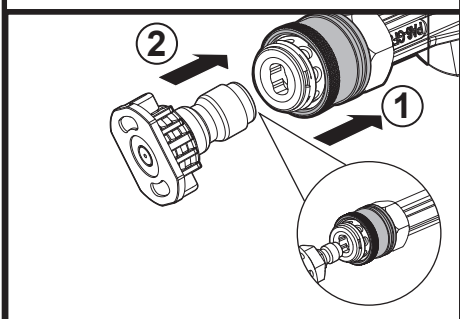
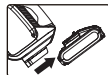
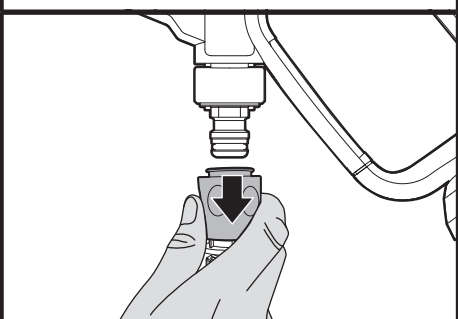
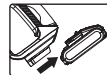
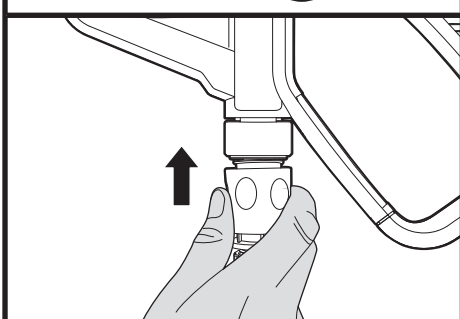
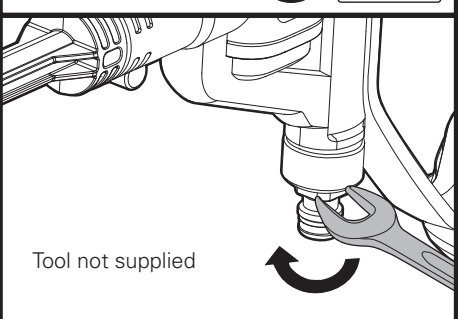
**ABN:** Australian Business Number. By this number, business information such as entity type, status, business location etc. can be found at website <http://abr.business.gov.au>.  
 ABN of Positec Australia Pty Limited is 14 101 682 357.



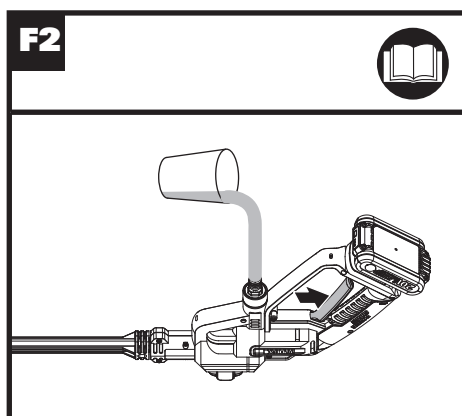
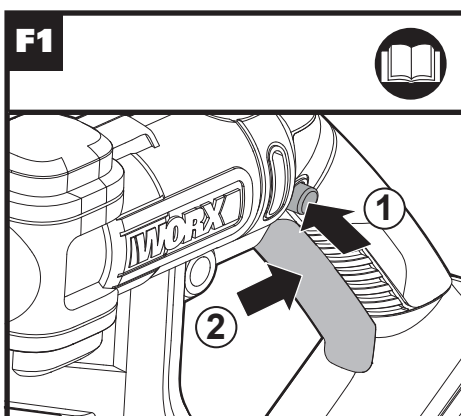
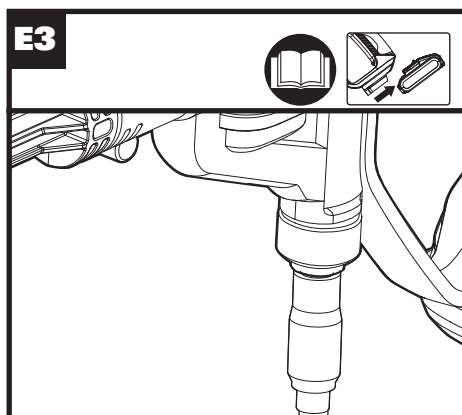
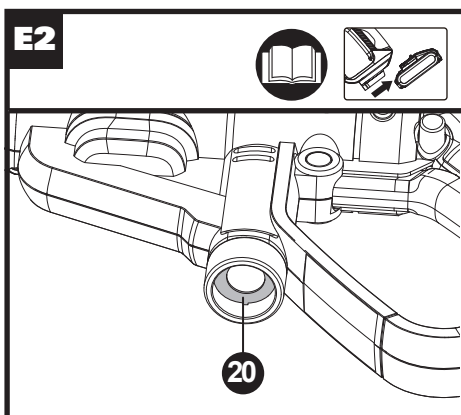
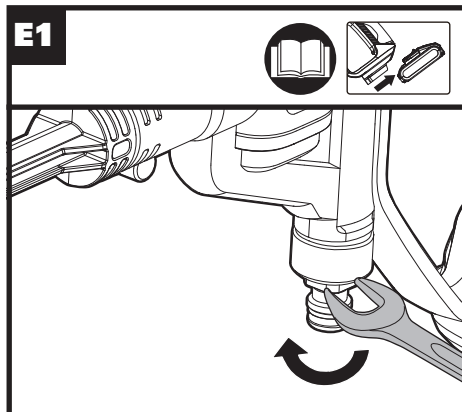
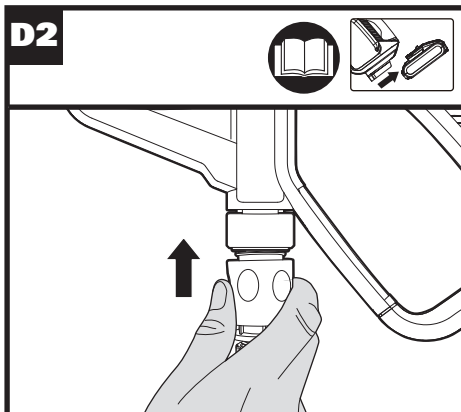
# OPTIONAL ACCESSORIES

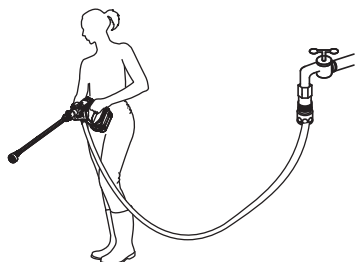
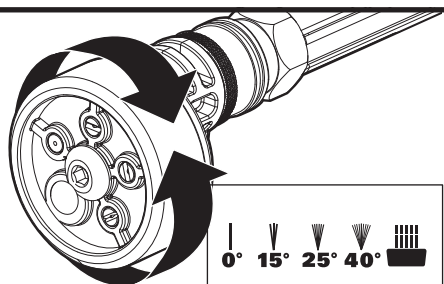
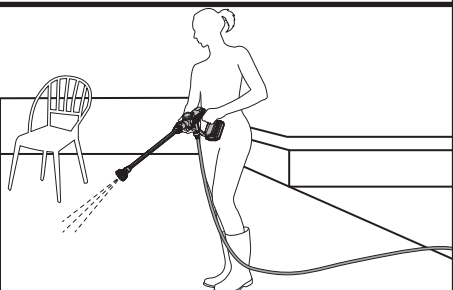
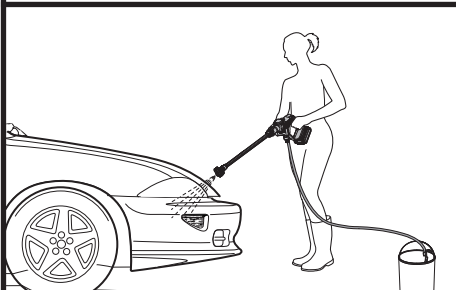
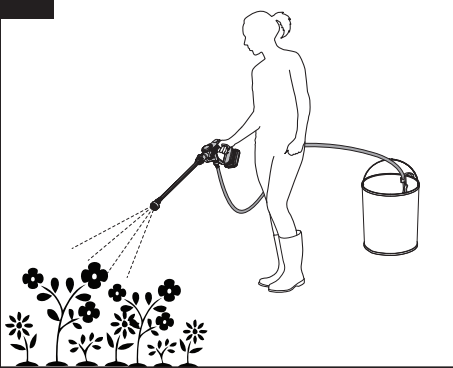
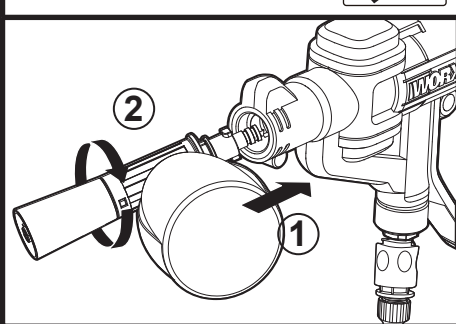


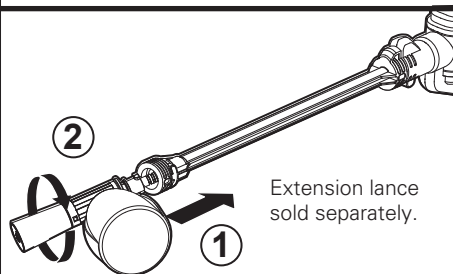
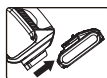


**B3****B4****C****D1****D2****E1**

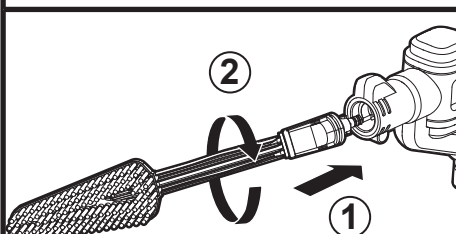
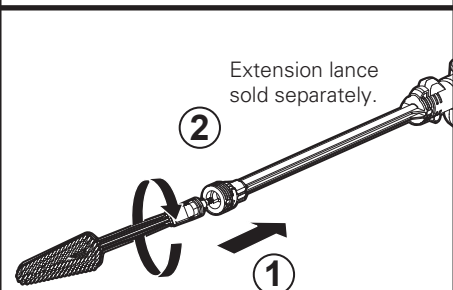




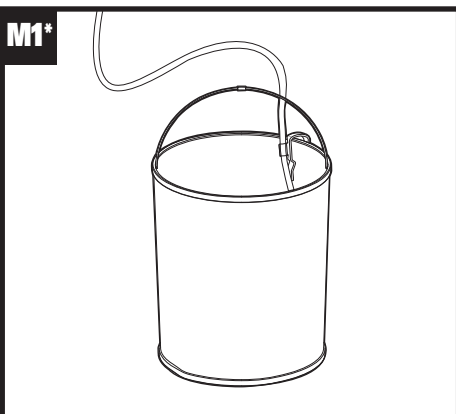
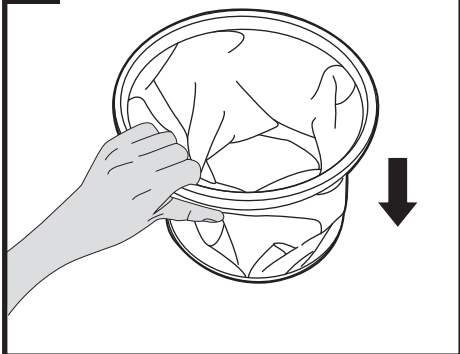
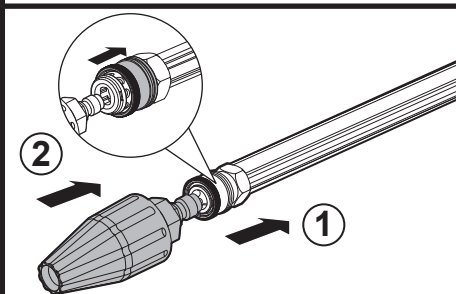
**F3****G****H****I****J****K1\***

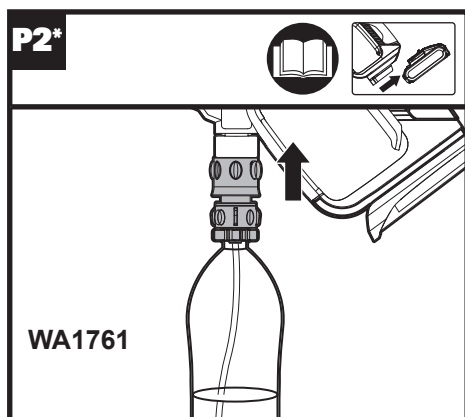
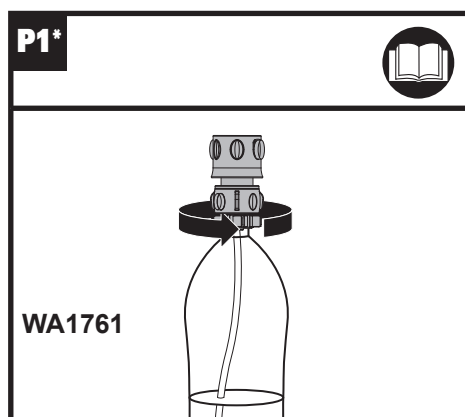
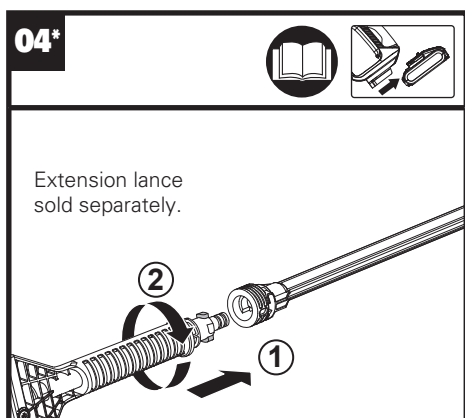
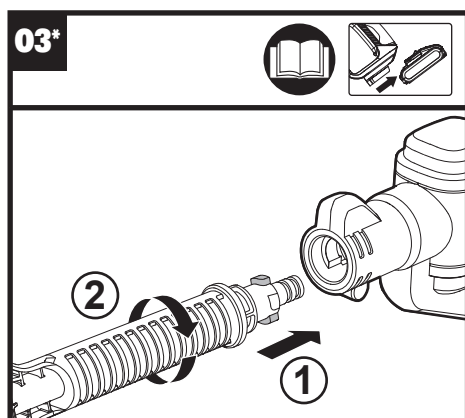
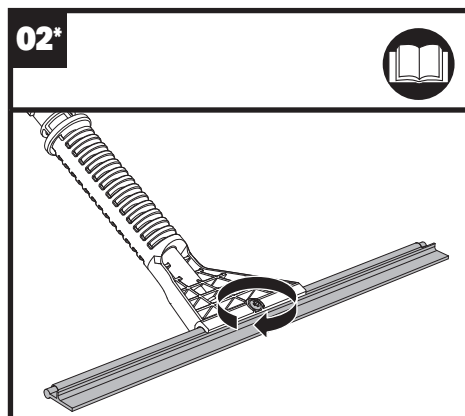
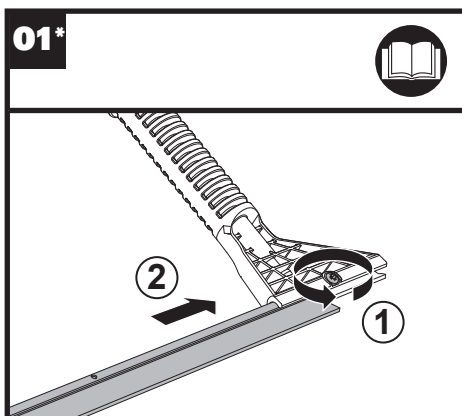
**K2\***

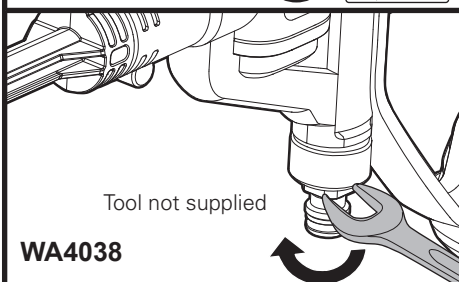
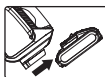
Extension lance  
sold separately.

**L1\*****L2\***

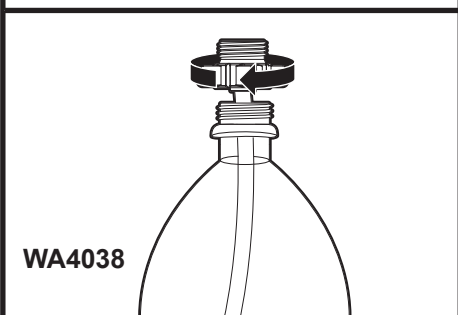
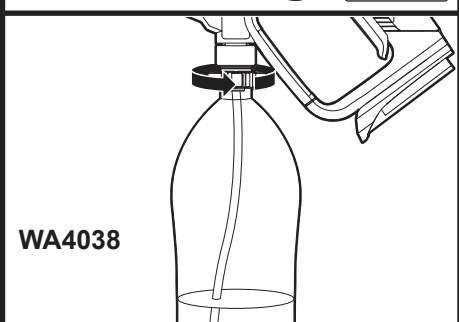
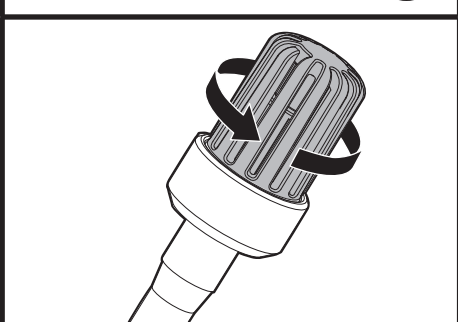
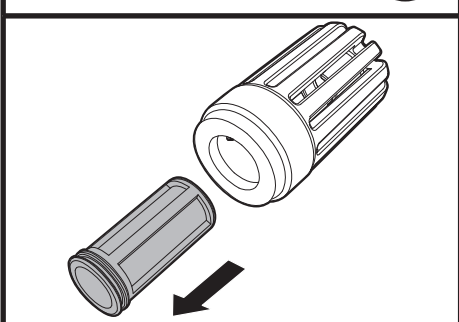
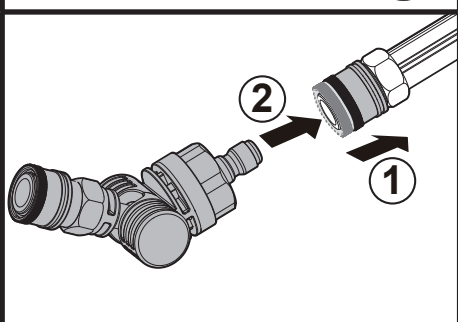
Extension lance  
sold separately.

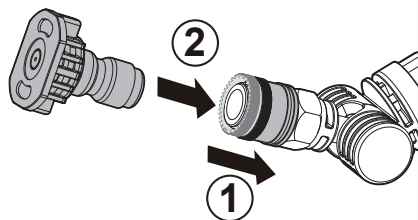
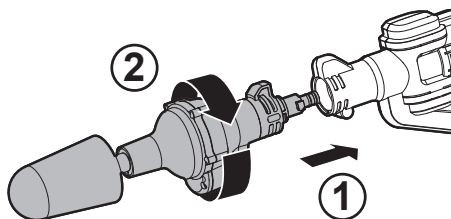
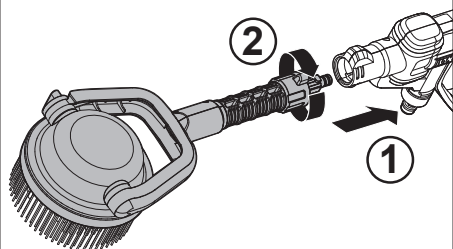
**M1\*****M2\*****N\***



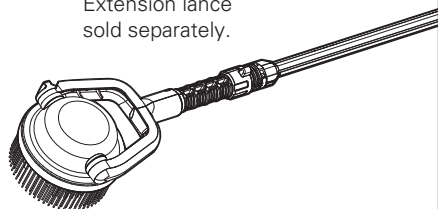
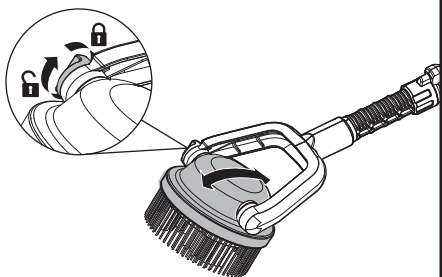
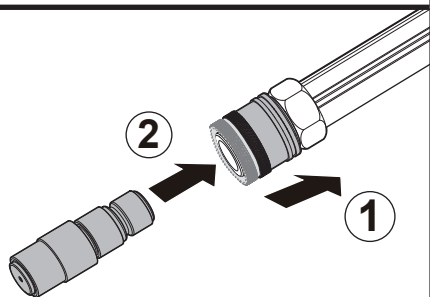
**P3\***

Tool not supplied

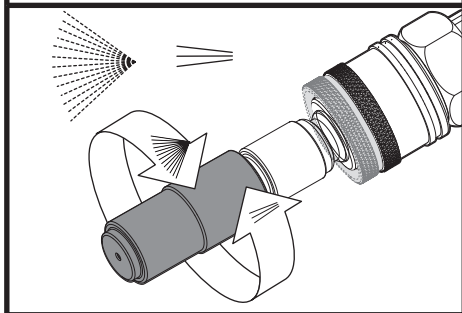
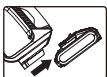
**WA4038****P4\*****WA4038****P5\*****WA4038****Q1****Q2****R1\***

**R2\*****S\*****T\*****U\***

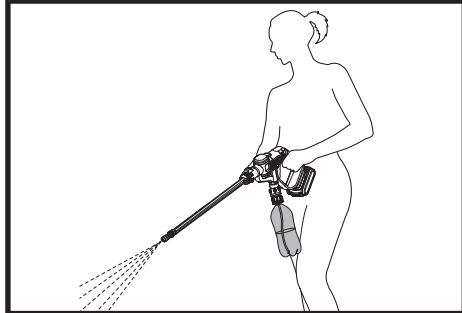
Extension lance  
sold separately.

**V\*****W1\***

W2\*



W3\*



# COMPONENT LIST

1.	LOCK-OFF SWITCH
2.	BATTERY PACK RELEASE BUTTON
3.	BATTERY PACK *
4.	ON/OFF SWITCH LEVER
5.	HOSE ADAPTER
6.	POWER NOZZLE
7.	PRESSURE CLEANING LANCE
8.	NOZZLE ADAPTER
9.	15° NOZZLE
10.	0° NOZZLE
11.	MULTI-SPRAY NOZZLE
12.	HOSE CONNECTOR
13.	HOSE FILTER
14.	HOSE CLIP
15.	HOSE
16.	FLOATER
17.	SOAP BOTTLE* (WA4036)
18.	BRUSH* (WA4048)
19.	FOLDABLE WATER BUCKET* (WA4015)
20.	FILTER SCREEN (SEE FIG. E2)
21.	TURBO NOZZLE * (WA4037)
22.	WINDOW SQUEEGEE WITH WATER SPRAYER * (WA4050)
23.	BOTTLE CAP CONNECTOR * (WA4038 / WA1761)
24.	PIVOTING QUICK CONNECT ADAPTER* (WA4039)
25.	ROTARY CLEANING BRUSH* (WA4042)
26.	ADJUSTABLE POWER SCRUBBER* (WA1820 / WA1821)
27.	EXTENSION LANCE* (WA4012)
28.	SHORT LANCE* (WA4013)
29.	CARRY BAG*
30.	FIXING NAIL

31.     **SPRAY NOZZLE\* (WA1843, NOT TO BE USED WITH ALCOHOL)**

**\* Not all the accessories illustrated or described are included in standard delivery.**

## TECHNICAL DATA

Type Designation   **WG620E WG620E.X (620-649 - designation of machinery, representative of battery-powered washer)**

	<b>WG620E WG620E.X***</b>
Voltage	20 V  Max**
Max. pressure	2.4 Mpa (24 bar)
Rated pressure	2.2 Mpa (22 bar)
Max water flow rate	120 L/h
Max. inlet water pressure	0.6 Mpa (6 bar)
Suction height	Max. 1.5 m
Machine weight (Bare Tool)	1.3 kg

\*\*Voltage measured without workload. Initial battery voltage reaches maximum of 20 volts. Nominal voltage is 18 volts.  
\*\*\*X=1-999, A-Z, M1-M9 there are only used for different customers, there are no safe relevant changes between these models.

## SUGGESTED BATTERIES AND CHARGERS

Category	Type	Capacity
20V Battery	WA3551	2.0 Ah
	WA3551.1	2.0 Ah
	WA3550	1.5 Ah
	WA3550.1	1.5 Ah
	WA3553	4.0 Ah
	WA3641	6.0 Ah
20V Charger	WA3880	2.0 A
	WA3760	0.4 A
	WA3867	6.0 A

We recommend that you purchase your accessories from the same store that sold you the tool. Refer to the accessory packaging for further details. Store personnel can assist you and offer advice.



NOISE DATA

A weighted sound pressure	$L_{PA}$ : 73.8 dB(A)
A weighted sound power	$L_{WA}$ : 84.8 dB(A)
$K_{PA}$	2.35 dB(A)

Wear ear protection



VIBRATION INFORMATION

Typical weighted vibration	$a_{\text{H}}$ = 1.339 m/s <sup>2</sup> K = 1.5 m/s <sup>2</sup>
----------------------------	---

The declared vibration total value may be used for comparing one tool with another, and may also be used in a preliminary assessment of exposure.

**WARNING:** The vibration emission value during actual use of the power tool can differ from the declared value depending on the ways in which the tool is used dependant on the following examples and other variations on how the tool is used:

How the tool is used and the materials being cut or drilled. The tool being in good condition and well maintained Using the correct accessory for the tool and ensuring it is sharp and in good condition. The tightness of the grip on the handles and if any anti vibration accessories are used. And the tool is being used as intended by its design and these instructions.

**This tool may cause hand-arm vibration syndrome if its use is not adequately managed.**

**WARNING:** To be accurate, an estimation of exposure level in the actual conditions of use should also take account of all parts of the operating cycle such as the times when the tool is switched off and when it is running idle but not actually doing the job. This may significantly reduce the exposure level over the total working period.

Helping to minimise your vibration exposure risk. Maintain this tool in accordance with these instructions and keep well lubricated (where appropriate). If the tool is to be used regularly then invest in anti vibration accessories. Plan your work schedule to spread any high vibration tool use across a number of days.

OPERATING INSTRUCTIONS



**NOTE:** Before using the tool, read the instruction book carefully.

INTENDED USE

This tool is intended for cleaning and watering.

ASSEMBLY & OPERATION

ACTION	FIGURE
<b>BEFORE OPERATION</b>	
Installing the battery pack	See Fig. A1
Removing the battery pack	See Fig. A2
Checking the battery condition <b>NOTE:</b> Fig. A3 only applies for the battery pack with battery indicator light.	See Fig. A3
Charging the battery pack More details can be found in charger's manual	See Fig. A4
<b>ASSEMBLY</b>	
Way 1: Attaching pressure cleaning lance to the power nozzle <b>NOTE:</b> When attaching, align the two projections on the lance with the grooves of the power nozzle as shown in Fig. B1.	See Fig. B1
Way 2: Attaching short lance to the machine <b>NOTE:</b> When attaching, align the two projections on the lance with the grooves of the machine as shown in Fig. B2.	See Fig. B2
Way 3: Attaching extension lance to the power nozzle, then attaching the short lance to the extension lance <b>NOTE:</b> When attaching, align the two projections as shown in Fig. B3 and Fig. B4.	See Fig. B3, B4
Attaching the spray nozzle <b>NOTE:</b> When attaching, rotate the nozzle left and right to make sure the nozzle fully seated into position and gently pulling it to make sure it is locked into position securely. Please choose the right nozzle according to the working conditions.	See Fig. C2
Attaching the hose to the power nozzle and use it with foldable water bucket or throw it into other water sources <b>NOTE:</b> After the hose is attached, check the connection by gently pulling upon the hose. It should not be pulled off.	See Fig. D1, D2

Attaching your own water hose (optional)

1. Remove the hose adapter
2. Attach the home garden hose with suitable connectors

**NOTE:** Besides the hose supplied, you can also connect the power nozzle to your own water hose with suitable connectors, but water leakage may occur.

**NOTE:** Check whether the filter screen is missing before retightening the hose adapter as shown in Fig. E1 and Fig. E2. When retightening the quick hose adapter, please tighten securely. Otherwise, it may not draw any water for proper operation.

See Fig.  
E1-E3

#### OPERATION


 **WARNING: The supplied battery is not waterproof. To avoid risk of battery failure, protect the battery from water exposure during use. Store the tool and battery in a dry place after use.**


Start

**NOTE:** At the first use or after long-term storage, it is recommended to attach the tap or inject water into the hose adapter with the machine turned on, so as to empty the air. Do not start working until the water goes up along the hose and sprays out.

See Fig.  
F1-F3


Selecting the nozzle pattern

**NOTE:** Choose a suitable nozzle pattern according to your work. Spray patterns 0°, 15°, 25° and 40° are applicable for cleaning, and the spray pattern with the symbol  is best suitable for watering.

 **WARNING:** Do not shift the nozzle pattern when the tool is powered on.

See Fig. G

Cleaning

 **WARNING: Do not connect the machine to water supplies that are dirty, rusty, muddy, or corrosive. (Including window cleaning liquids, plant foods, or fertilizers etc.)**

**NOTE:** For proper maintenance after using with sea water, the product should be rinsed by fresh water.

See Fig. H, I

Watering

See Fig. J

## ATTACHMENT OF ACCESSORIES

A number of accessories have been supplied with this product and are required for use in different applications. **Do not attempt to use cleaning without a lance or any accessories attached.**

### 1. Soap bottle (WA4036, sold separately)

Soap bottle provides detergent suds for deeper cleaning of dirt. It is used in conjunction with power nozzle or extension lance. (See Fig. K1, K2)

### 2. Brush (WA4048, sold separately)

Brush is for cleaning cars, boats, motorcycles etc. It is used in conjunction with power nozzle or extension lance. (See Fig. L1, L2)

### 3. Foldable water bucket (WA4015, sold separately)

Foldable water bucket allows you to connect to water supply when you are far away from a water source. When not in use, it can be folded for storage. (See Fig. M1, M2)

### 4. Turbo nozzle (WA4037, sold separately)


The turbo nozzle delivers 360° of rotating water, which cleans a larger area than the 0° water pattern during the same time period. Recommend to use it with high pressure setting. (See Fig. N)

### 5. Window squeegee with water sprayer (WA4050, sold separately)

The window squeegees quick connection easily snaps into the tool to spray water or wipe off water from glass or tiled surfaces. Suitable for the HYDROSHOT™ power cleaner or the extension lance. (See Fig. O1, -O4)

### 6. Bottle cap connector (WA4038 / WA1761, sold separately)

The bottle cap connector accessory allows the tool to directly connect with most 2 Liter bottles with approximately 1" openings. (**NOTE:** May not fit all consumable soda and water bottles) (See Fig. P1-P5)

 **WARNING:** Do not install the bottle cap connector accessory until it is ready to be used. The accessories vents will leak liquid, if a bottle is installed, with the machine lying on a surface.

### 7. Pivoting Quick Connect Adapter (WA4039, sold separately)

The Pivoting Quick Connect Adapter allows power cleaning tips to be fully adjusted up to 180° in any direction. Ideal for cleaning around hard-to-reach areas. Suitable for the HYDROSHOT™ power cleaner and multi-spray nozzle (See Fig. R1, R2)

### 8. Rotary Cleaning Brush (WA4042, sold separately)

The rotary cleaning brush accessory easily snaps into the tool for cleaning sensitive surfaces and around tight spaces. Suitable for the HYDROSHOT™ power cleaner with/without the extension lance installed. (See Fig. S)

### 9. Adjustable Power Scrubber (WA1820 / WA1821, sold separately)

The water powered rotary scrubber accessory easily snaps into the tool for cleaning hard surfaces. Suitable for the

# 2 in 1: Portable Power Cleaner/Water Sprayer WG620E WG620E.X

HYDROSHOT™ power cleaner with/without the extension lance installed. (See Fig. T-V) The soft scrubber (WA1820) is applicable for sensitive surfaces and the hard bristle scrubber (WA1821) is applicable for cleaning hard surfaces (not recommended for cars).

#### 10. Spray Nozzle (WA1843, sold separately)

The spray nozzle is intended to be easily connected directly to the HYDROSHOT™, providing disinfectant for any disinfecting project. It is recommended to use it with the bottle cap accessory WA4038 (sold separately). (See Fig. W1-W3)



**WARNING: The spray nozzle cannot be used with alcohol.**

## MAINTENANCE

#### **Remove the battery pack from the tool before carrying out any adjustment, servicing or maintenance.**

Inspect the product for damaged or worn parts before each use. Do not operate it if you find damaged or worn parts. Contact your supplier or the manufacturer for replacement parts.

#### **Hose filter maintenance**

Remove the hose filter from the hose and get out the strainer. Rinse the parts with clean water before reassembling. (See Fig. Q1, Q2)

#### **Filter screen maintenance**

Remove the hose adapter to get the filter screen. (See Fig. E1, E2) Rinse it with clean water before reassembling.

**NOTE:** When retightening the hose adapter, please tighten securely. Otherwise, it may not draw any water for proper operation.



**WARNING: Any other servicing should be performed by an authorized service representative.**

#### **CLEANING/STORAGE**

Before Storage, completely drain all the water from the machine and hose.

Clean the moulded plastic housing of the machine using a soft brush and clean cloth. Do not use water, solvents or polishes. Store in a secure and dry place out of the reach of children. Do not place other objects on the product.

Store the machine and the accessories in a frost free place.

## ENVIRONMENTAL PROTECTION



Waste electrical products must not be disposed of with household waste. Please recycle where facilities exist. Check with your local authorities or retailer for recycling advice.

## TROUBLESHOOTING

Symptom	Possible causes	Solution
Machine turns on but it does not draw any water or there is not sufficient pressure.	Power nozzle is too high from the water source surface.	Lower the machine below 5ft/1.5m.
	Hose filter is blocked.	Take out the hose filter and rinse the parts with clean water. (See Fig. Q1, Q2)
	The users garden hose is not well connected to the machine.	Check and reattach the garden hose tightly. (See Fig. E1-E3)
	Hose adapter looses. The filter screen is missing. (See Fig. E1 E2)	Tighten the hose adapter securely with a spanner. Contact WORX service agent to get a filter screen.
	Pump, hose, or other parts are frozen due to outside temperatures.	Wait for the pump, hose or other parts to thaw.
	Hose kinks.	Straighten out the hose.
Multi-spray nozzle leaks.	The nozzle pattern does not spray correctly.	Make sure the nozzle pattern symbol aligns with the indicator mark on tool.
	Fixing nail of the multi-spray nozzle loosens.	Tighten it with a hex key.
Outlet pressure increases suddenly.	Multi-spray nozzle is blocked.	Replace with a new multi-spray nozzle.
Machine drains out water after stopping.	There is water remaining in the lance and pump after stopping.	Drain all the water completely before storage.
Soap accessory cannot spray out any detergent.	Blockage in the soap bottle.	Clean it with fresh water.
Machine does not start.	The battery pack is not attached well.	Reinstall the battery pack.
	Battery pack is empty.	Replace with a new battery pack or recharge the battery pack.
	Defective battery.	Replace with a new battery pack.
Machine pressure is not consistent.	Additional air could be sucked into the machine.	Check connection between the hose adapter and the hose.
	It is at low pressure setting.	No action need.
Machine stops automatically.	Battery pack is empty.	Replace with a new battery pack or recharge the battery pack.
	The multi-spray nozzle is blocked. The current protection is activated.	Remove the multi-spray nozzle and turn on the machine. If the machine works normally, replace with a new multi-spray nozzle.
Machine doesn't self-priming after being left unused for a long time.	The machine sucked in air.	Connect the machine to the water source first and then turn on.

Positec Australia Pty Limited  
10 Corporate Blvd Bayswater, VIC 3153, Australia

## 2 in 1: Portable Power Cleaner/Water Sprayer

### WG620E WG620E.X

# DECLARATION OF CONFORMITY

We,  
Positec Germany GmbH  
Postfach 32 02 16, 50796 Cologne, Germany

On behalf of Positec declare that the product  
Description **Battery-operated washer**  
Type **WG620E WG620E.X (620-649 - designation of machinery, representative of battery-powered washer)**  
Function **Cleaning and watering**

Complies with the following Directives:

**2006/42/EC**

**2014/30/EU**

**2011/65/EU&(EU)2015/863**

**2000/14/EC amended by 2005/88/EC**

2000/14/EC amended by 2005/88/EC:

- Conformity Assessment Procedure as per **Annex V**
- Measured Sound Power Level **84.8 dB**
- Declared Guaranteed Sound Power Level **87 dB**

Standards conform to

**EN 60335-1**

**EN 60335-2-54**

**EN 62233**

**EN ISO 3744**

**EN 55014-1**

**EN 55014-2**

The person authorized to compile the technical file,

**Name Marcel Filz**

**Address Positec Germany GmbH**

**Postfach 32 02 16, 50796 Cologne, Germany**



2022/01/27

Allen Ding

Deputy Chief Engineer, Testing & Certification

Positec Technology (China) Co., Ltd

18, Dongwang Road, Suzhou Industrial

Park, Jiangsu 215123, P. R. China

# DECLARATION OF CONFORMITY

We,  
Positec (UK & Ireland) Ltd.  
PO Box 6242, Newbury, RG14 9LT, UK

On behalf of Positec declare that the product  
Description **Battery-operated washer**  
Type **WG620E WG620E.X (620-649 - designation of machinery, representative of battery-powered washer)**  
Function **Cleaning and watering**

Complies with the following regulations:  
**Supply of Machinery (Safety) Regulations 2008**  
**Electromagnetic Compatibility Regulations 2016**  
**The Restriction of the Use of Certain Hazardous Substances in Electrical and Electronic Equipment Regulations**

## Noise Emission in the Environment by Equipment for Use Outdoors Regulations

- Conformity Assessment Procedure as per **SCHEDULE 8**  
- Measured Sound Power Level **84.8 dB(A)**  
- Declared Guaranteed Sound Power Level **87 dB(A)**

Standards conform to

**BS EN 60335-1**

**BS EN 60335-2-54**

**BS EN 62233**

**BS EN ISO 3744**

**BS EN 55014-1**

**BS EN 55014-2**

The person authorized to compile the technical file,

**Name Jim Kirkwood**

**Address Positec (UK & Ireland) Ltd.**

**PO Box 6242, Newbury, RG14 9LT, UK**



**UK  
CA**

2022/01/27

Allen Ding

Deputy Chief Engineer, Testing & Certification

Positec Technology (China) Co., Ltd

18, Dongwang Road, Suzhou Industrial

Park, Jiangsu 215123, P. R. China

**2 in 1: Portable Power Cleaner/Water Sprayer  
WG620E WG620E.X**





#### **After-sales Service and Application**

At [www.worx.com](http://www.worx.com) you can order spare parts or arrange the collection of a product in need of servicing or repair.

Tel. Service: 0345 202 9679

E-Mail: [customerservices@worxtools.com](mailto:customerservices@worxtools.com)

**[www.worx.com](http://www.worx.com)**

Copyright © 2022, Positec. All Rights Reserved.  
AR01489105