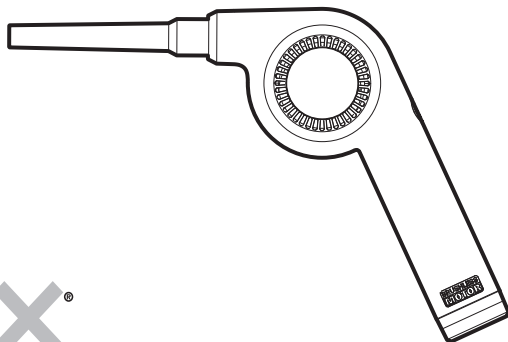


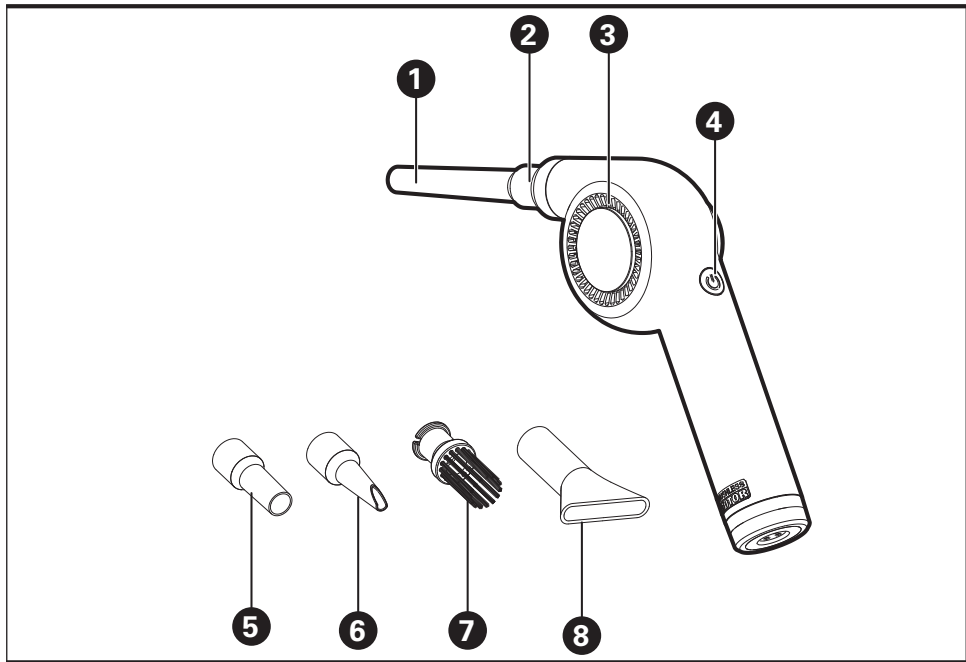
WORX®

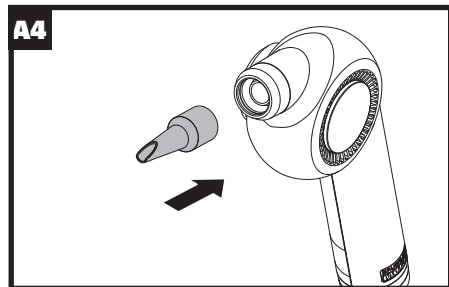
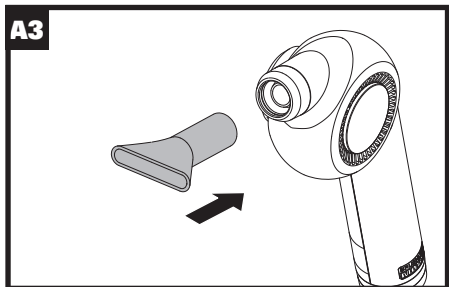
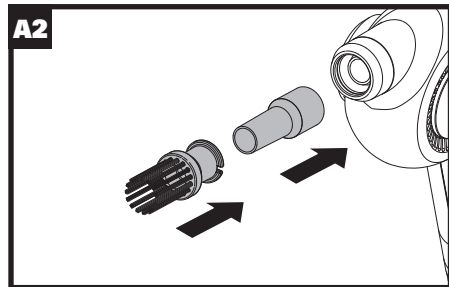
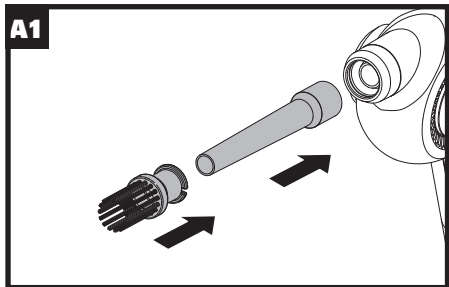


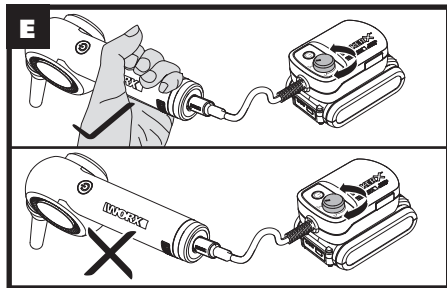
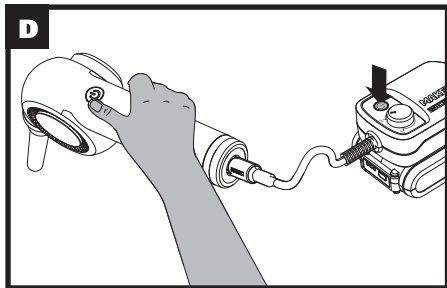
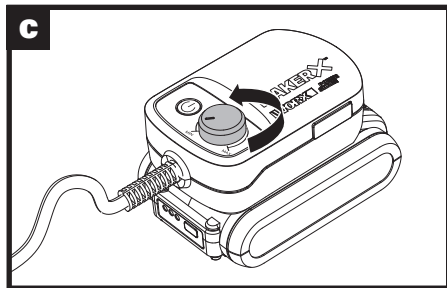
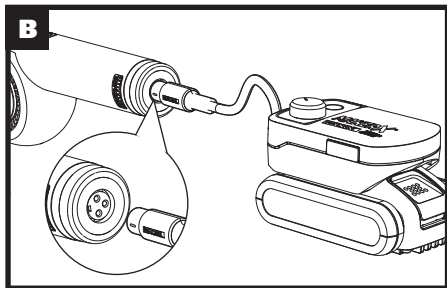
MAKERX®

20V Cordless Mini Blower

**WX747
WX747.X**







**ORIGINAL INSTRUCTION
PRODUCT SAFETY
GENERAL POWER TOOL SAFETY
WARNINGS**

 **WARNING Read all safety warnings and instructions.**

Failure to follow the warnings and instructions may result in electric shock, fire and/or serious injury.

Save all warnings and instructions for future reference.

The appliance is only to be used with the power supply unit provided with the appliance.

**IMPORTANT
READ CAREFULLY BEFORE**

**USE.
KEEP FOR FUTURE
REFERENCE.**

Safe operating practices

1) Training

- a) Read the instructions carefully. Be familiar with the controls and the correct use of the machine.
- b) Never allow children, persons with reduced physical, sensory or mental capabilities or lack of experience and knowledge or people unfamiliar with these instructions to use the machine, local

regulations may restrict the age of the operator.

- c) Never operate the machine while people, especially children, or pets are nearby.
- d) Keep in mind that the operator or user is responsible for accidents or hazards occurring to other people or their property.

2) Preparation

- a) While operating the machine, always wear substantial footwear and long trousers. Do not operate the machine when barefoot or wearing open

sandals. Avoid wearing clothing that is loose fitting or that has hanging cords or ties.

- b) Do not wear loose clothing or jewellery that can be drawn into the air inlet. Keep long hair away from the air inlets.
- c) Obtain ear protection and safety glasses. Wear them at all times while operating the machine.
- d) Operate the machine in a recommended position and only on a firm, level surface.
- e) Do not operate the machine on a paved or gravel surface

where ejected material could cause injury.

- f) Before using, always visually inspect to see, that the fasteners are secure, the housing is undamaged and that guards and screens are in place. Replace worn or damaged components in sets to preserve balance. Replace damaged or unreadable labels.
- 3) Operation**
- a) Before starting the machine, make certain that the feeding chamber is empty.
 - b) Keep your face and body away from the feed intake opening.
 - c) Do not allow hands or any other part of the body or clothing inside the feeding chamber, discharge chute, or near any moving part.
 - d) Keep proper balance and footing at all times. Do not overreach.
 - e) Always stand clear of the discharge zone when operating this machine.
 - f) If the machine should start making any unusual noise or vibration, immediately shut off the power source and allow the machine to stop.

Remove the battery pack from the machine and take the following steps before restarting and operating the machine:

- i) inspect for damage;
 - ii) replace or repair any damaged parts;
 - iii) check for and tighten any loose parts.
- g) Do not allow processed material to build up in the discharge zone; this may prevent proper discharge and can result in kickback of material through the intake opening.
- h) If the machine becomes
- clogged, shut-off the power source and remove the battery pack from the machine before cleaning debris.
- i) Never operate the machine with defective guards or shields, or without safety devices.
 - j) Keep the power source clean of debris and other accumulations to prevent damage to the power source or possible fire.
 - k) Do not transport this machine while the power source is running.
 - l) Always disconnect the

machine from the power supply (e.g. remove the battery pack from the machine)

- whenever you leave the machine,
- before clearing blockages or unclogging chute,
- before checking, cleaning or working on the machine.

m) Avoid using the machine in bad weather conditions especially when there is a risk of lightning.

4) Maintenance and storage

a) keep all nuts, bolts and screws tight to be sure the

appliance is in safe working condition.

b) Replace worn or damaged parts.

c) Use only genuine replacement parts and accessories.

d) Store the machine in a dry place out of the reach of children.

e) When the machine is stopped for servicing, inspection, or storage, or to change an accessory, shut off the power source, disconnect the machine from the supply and make sure that all moving parts

are come to a complete stop. Allow the machine to cool before making any inspections, adjustments, etc. Maintain the machine with care and keep it clean.

- f) Store the machine in a dry place out of the reach of children.
- g) Always allow the machine to cool before storing.
- h) Never attempt to override the interlocked feature of the guard.

SAFETY WARNINGS FOR BATTERY PACK

- a) Do not dismantle, open or shred cells or battery pack.**
- b) Do not short-circuit a battery pack. Do not store battery packs haphazardly in a box or drawer where they may short-circuit each other or be short-circuited by conductive materials.**

When battery pack is not in use, keep it away from other metal objects, like paper clips, coins, keys, nails, screws or other small

metal objects, that can make a connection from one terminal to another. Shorting the battery terminals together may cause burns or a fire.

- c) Do not expose battery pack to heat or fire. Avoid storage in direct sunlight.**
- d) Do not subject battery pack to mechanical shock.**
- e) In the event of battery leaking, do not allow the liquid to come into contact with the skin or eyes. If contact has been made, wash the affected**

area with copious amounts of water and seek medical advice.

- f) Keep battery pack clean and dry.**
- g) Wipe the battery pack terminals with a clean dry cloth if they become dirty.**
- h) Battery pack needs to be charged before use. Always refer to this instruction and use the correct charging procedure.**
- i) Do not maintain battery pack on charge when not in use.**
- j) After extended periods**





of storage, it may be necessary to charge and discharge the battery pack several times to obtain maximum performance.

- k) Recharge only with the charger specified by Worx. Do not use any charger other than that specifically provided for use with the equipment.**
- l) Do not use any battery pack which is not designed for use with the equipment.**
- m) Keep battery pack out of the reach of children.**

- n) Retain the original product literature for future reference.**
- o) Remove the battery from the equipment when not in use.**
- p) Dispose of properly.**
- q) Do not mix cells of different manufacture, capacity, size or type within a device.**
- r) Keep the battery away from microwaves and high pressure.**

SYMBOLS

	Read the operator's manual.
	Wear eye protection
	Wear ear protection
	Do not expose to rain
	Wear protective gloves
	Keep bystanders away
	Warning of hazard

	Do not burn
	Batteries may enter water cycle if disposed improperly, which can be hazardous for ecosystem. Do not dispose of waste batteries as unsorted municipal waste.
	Li-Ion battery. This product has been marked with a symbol relating to 'separate collection' for all battery packs and battery pack. It will then be recycled or dismantled in order to reduce the impact on the environment. Battery packs can be hazardous for the environment and for human health since they contain hazardous substances.
	Waste electrical products must not be disposed of with household waste. Please recycle where facilities exist. Check with your local authorities or retailer for recycling advice

COMPONENT LISTS

1. LONG NOZZLE

2. AIR OUTLET

3. BLOWER HOUSING

4. ON/OFF SWITCH

5. SHORT NOZZLE * (AVAILABLE ON WORX.COM)

6. SHARP NOZZLE * (AVAILABLE ON WORX.COM)

7. BRUSH ADAPTER * (AVAILABLE ON WORX.COM)

8. AIR BLADE NOZZLE* (AVAILABLE ON WORX.COM)

*** Not all the accessories illustrated or described are included in standard delivery.**

TECHNICAL DATA

Type Designation **WX747 WX747.X (747-designation of machinery, representative of mini blower)**

	WX747 WX747.X*
Rated Voltage	20 V \equiv Max**
No load speed	32000 r/min

Max Wind Speed	30 m/s
Runtime (2.0 Ah)	45-60 mins
Machine weight (bare tool)	191 g

* X=1-99, A-Z, M1-M9 there are only used for different customers, there are no safe relevant changes between these models.

**Voltage measured without workload. Initial battery voltage reaches maximum of 20 volts. Nominal voltage is 18 volts.

NOISE INFORMATION

A weighted sound pressure L_{pA} : 75.2 dB(A)

A weighted sound power L_{wA} : 86.2 dB(A)

K_{pA} & K_{wA} 3 dB(A)

Wear ear protection.

VIBRATION INFORMATION

Typical weighted vibratione a_h <2.5 m/s²

Uncertainty K = 1.5 m/s²

The declared vibration total value may be used for comparing one tool with another, and may also be used in a preliminary assessment of exposure.



WARNING: The vibration emission value during actual use of the power tool can differ from the declared value depending on the ways in which the tool is used dependant on the following examples and other variations on how the tool is used:

How the tool is used.

The tool being in good condition and well maintained

The use the correct accessory for the tool and ensuring it is sharp and in good condition.

The tightness of the grip on the handles and if any anti vibration accessories are used.

And the tool is being used as intended by its design and these instructions.

This tool may cause hand-arm vibration syndrome if its use is not adequately managed.



WARNING! To be accurate, an estimation of exposure level in the actual conditions of use should also take account of all parts of the operating cycle such as the times when the tool is switched off and when it is running idle but not actually doing the job. This may significantly reduce the exposure level over the total working period.

Helping to minimise your vibration exposure risk.

Maintain this tool in accordance with these instructions

and keep well lubricated (where appropriate)

If the tool is to be used regularly then invest in anti vibration accessories.

Plan your work schedule to spread any high vibration tool use across a number of days.

Category	Model	Capacity
20V Hub/ HubX	WA7160	Input: 20 V 10 A Max. Output: 20 V 10 A Max.
	WA7161	Input: 20 V 10 A Max. Output: 20 V 10 A Max. Or Output: 5 V 2 A (USB port)

We recommend that you purchase your accessories from the same store that sold you the tool. Refer to the accessory packaging for further details. Store personnel can assist you and offer advice.

MakerX series tools and 20V Hub/HubX are specially designed to work together, so do not attempt to use any other devices.

OPERATING INSTRUCTIONS



NOTE: Before using the tool, read the instruction book carefully.

INTENDED USE:

The machine is intended for cleaning and painting.

ASSEMBLY

1. Fitting the nozzle. (See Fig. A1, A2, A3, A4)

Long nozzle and short nozzle are suitable to dust surfaces. The difference between them lies in the air force. A short nozzle is more powerful.

Brush adapter should be equipped with long nozzle or short nozzle to use.

Air blade nozzle is used to clean up trash and dust in crevices.

In addition to cleaning, tip nozzle and air blade nozzle can be used for painting.

2. Connect the mini blower to the hub. (See Fig. B)



WARNING: Before operation, make sure the speed control button on the hub is at the "Min" position. (See Fig. C)

OPERATION

1. Confirm the speed control button is set to "Min".

Grasp the tool by the grip. Press the On/Off switch on the hub and that on the mini blower to start the machine. (See Fig. D)



WARNING: Never use tools with defective On/Off switch. In the case of all other types of technical faults, please contact helpline or local service center.

2. Adjust speed as needed. (See Fig. E)

The air speed is adjustable for a wide range of applications. High speed can be used to dust electronic devices, such as a computer keyboard, laptop, copy machine, medical equipment, camera, model vehicles, and blinds etc.

And low speed can be used for acrylic painting.

NOTE: After usage, press the on/off switch on the mini blower and that on the hub to turn off the machine and disconnect it from the hub. For sake of safety, adjust the speed control button to "Min" position once completing the operation.

FOR BATTERY TOOLS

The ambient temperature range for the use and storage of tool and battery is 0°C–45°C.

The recommended ambient temperature range for the charging system during charging is 0°C–40°C.

MAINTENANCE

Remove the battery pack from the machine before carrying out any adjustment, servicing or maintenance.

Your power tool requires no additional lubrication or maintenance.

There are no user serviceable parts in your power tool. Never use water or chemical cleaners to clean your power tool. Wipe clean with a dry cloth. Always store your power tool in a dry place. Keep the motor ventilation slots clean. Keep all working controls free of dust. Occasionally you may see sparks through the ventilation slots. This is normal and will not damage your power tool.

ENVIRONMENTAL PROTECTION



Waste electrical products must not be disposed of with household waste. Please recycle where facilities exist. Check with your local authorities or retailer for recycling advice.

DECLARATION OF CONFORMITY

We,
Positec Germany GmbH
Postfach 32 02 16, 50796 Cologne, Germany

On behalf of Positec declare that the product
Description **Battery-operated Mini Blower**
Type **WX747 WX747.X (747-designation of machinery, representative of battery-operated Blower Vacuum)**
Function **blowing**

Complies with the following Directives:

EN

2006/42/EC

18

2014/30/EU

2011/65/EU&(EU)2015/863

2000/14/EC amended by 2005/88/EC

2000/14/EC amended by 2005/88/EC:

- Conformity Assessment Procedure as per **Annex V**
- Measured Sound Power Level **86.2 dB (A)**
- Declared Guaranteed Sound Power Level **89 dB (A)**

Standards conform to

EN 60335-1

EN 50636-2-100

EN 62233

EN ISO 3744

EN 55014-1

EN 55014-2

The person authorized to compile the technical file,

Name Marcel Filz

Address Positec Germany GmbH

**Postfach 32 02 16, 50796 Cologne,
Germany**



2021/03/15

Allen Ding

Deputy Chief Engineer, Testing & Certification

Positec Technology (China) Co., Ltd

18, Dongwang Road, Suzhou Industrial
Park, Jiangsu 215123, P. R. China

DECLARATION OF CONFORMITY

We,
Positec Power Tools (Europe) Ltd,
PO Box 6242, Newbury, RG14 9LT, UK

On behalf of Positec declare that the product
Description **Battery-operated Mini Blower**
Type **WX747 WX747.X (747-designation of
machinery, representative of battery-operated
Blower Vacuum)**
Function **blowing**

Complies with the following regulations:
Supply of Machinery (Safety) Regulations 2008
Electromagnetic Compatibility Regulations 2016
**The Restriction of the Use of Certain Hazardous
Substances in Electrical and Electronic
Equipment Regulations**

Noise Emission in the Environment by Equipment for
Use Outdoors Regulations
- Conformity Assessment Procedure as per
SCHEDULE 8
- Measured Sound Power Level **86.2 dB (A)**
- Declared Guaranteed Sound Power Level **89 dB (A)**

Standards conform to
BS EN 60335-1
BS EN 50636-2-100

BS EN 62233
BS EN ISO 3744
BS EN 55014-1
BS EN 55014-2

The person authorized to compile the technical file,
Name **Jim Kirkwood**
Address **Positec Power Tools (Europe) Ltd,
PO Box 6242, Newbury, RG14 9LT, UK**



2021/03/15
Allen Ding
Deputy Chief Engineer, Testing & Certification
Positec Technology (China) Co., Ltd
18, Dongwang Road, Suzhou Industrial
Park, Jiangsu 215123, P. R. China



www.worx.com

Copyright © 2021, Positec. All Rights Reserved.