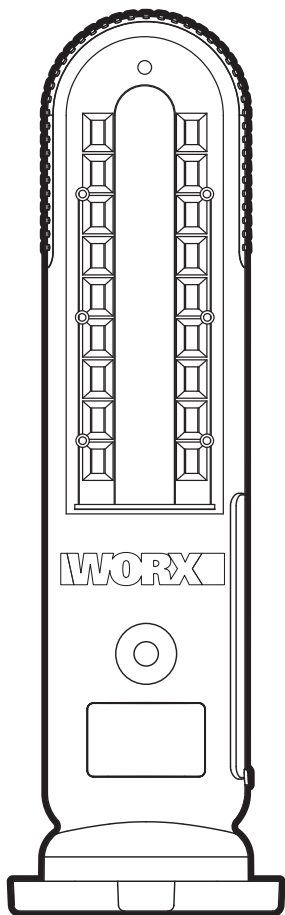


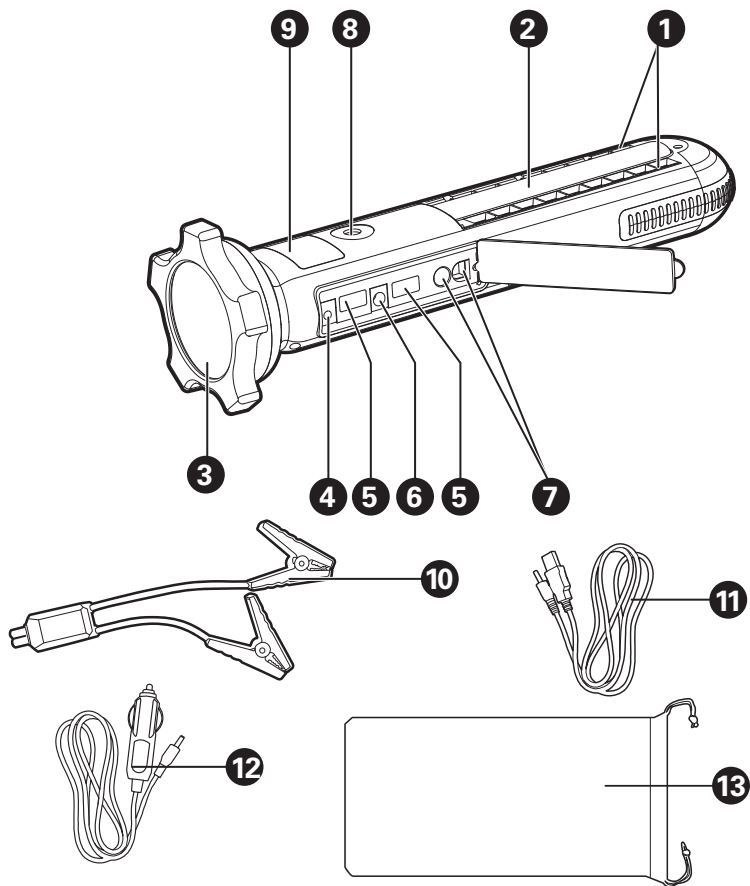
WORX

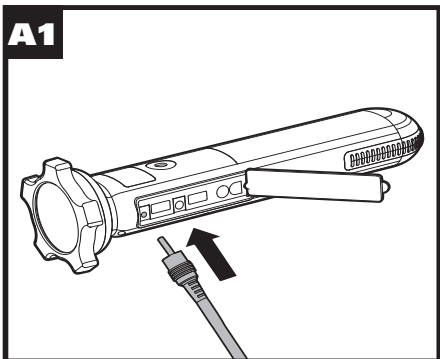
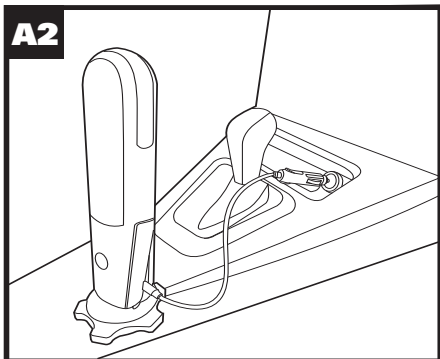
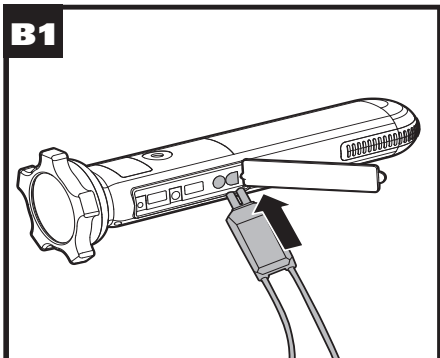
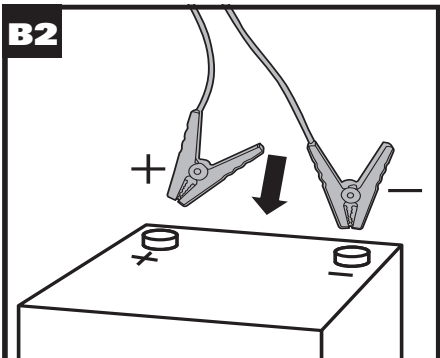
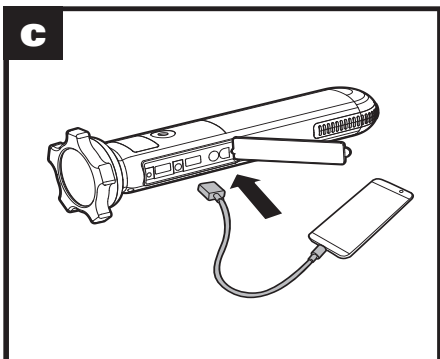


SAFETY AND OPERATING MANUAL ORIGINAL INSTRUCTIONS

**12V Multifunction Jump
Starter with LED Lights**

**WX852
WX852.X**



A1**A2****B1****B2****C**

GENERAL SAFETY WARNINGS



WARNING Read all safety warnings and all instructions. Failure to follow the warnings

and instructions may result in electric shock, fire and/or serious injury.

Save all warnings and instructions for future reference.

This appliance can be used by children aged from 8 years and above and persons with reduced physical, sensory or mental capabilities or lack of experience and knowledge if they have been given supervision or instruction concerning use of the appliance in a safe way and understand the hazards involved. Children shall not play with the appliance. Cleaning and user maintenance shall not be made by children without supervision.

ADDITIONAL SAFETY INSTRUCTIONS FOR JUMP STATER

1. Do not use the unit for works other than those for which they are designed.
2. Do not disassemble the unit and keep it out of the reach of children.
3. Do not expose to rain or get wet.
4. Do not contact hot parts.
5. Only use attachments recommended or sold by the manufacturer.
6. Do not short out the contacts of Jump stater.
7. Do not charge the Jump stater with a damaged wall charger or power extension cord. Replace them immediately.
8. When using, ensure that the product is in a well-ventilated area and away from inflammable materials.
9. Batteries can get hot during charging. Do not overcharge any batteries. Ensure that Jump stater are not left unsupervised during charging.
10. Protect the product away from fire and heat, such as sunlight, or car and trunk in summer .
11. Please use the specified charger (cable) for charging. If the product or cable is damaged, please do not use the product.
12. Do not disassemble, bump, squeeze, puncture or penetrate the product.
13. Keep jump starter dry, clean and oil-free. Be sure to use a clean cloth when cleaning and do not use any corrosive solvent.
14. Longer life and better performance can be obtained if the battery is charged when the air temperature is between 18°C and 24°C. Do not charge the battery in air temperatures below 0°C, or above 40°C. This is important as it can prevent serious damage to the battery.
15. Do not recharge non-rechargeable batteries, as they can overheat and break.
16. Remove battery pack before performing any routine maintenance or cleaning.
17. The light source of this luminaire is not replaceable;

when the light source reaches its end of life the whole luminaire shall be replaced.

ADDITIONAL SAFETY INSTRUCTIONS FOR USING AS JUMP STARTER

WARNING: The POWERLIGHT RESCUE should only be used as a jump starter with the supplied Safety Cable. NEVER use an alternate cable when jump starting with the POWERLIGHT RESCUE

1. Someone should always be within range of your voice or close enough to come to your aid when you work near a lead-acid battery.
2. Have plenty of fresh water and soap nearby in case battery acid contacts skin, clothing or eyes. Protective eyewear should always be worn when working near lead-acid batteries.
3. If battery acid contacts skin or clothing, wash immediately with soap and water. If acid enters eye, immediately flood eye with running cold water for at least 10 minutes and get medical attention immediately.
4. Be extra cautious to reduce risk of dropping a metal tool onto a battery. It might spark or short circuit the battery or another electrical part that may cause explosion.
5. Remove personal metal items such as rings, bracelets, necklaces and watches when working with a lead-acid battery. A lead-acid battery can produce a short-circuit current high enough to weld a ring or the like to metal, causing a severe burn.
6. Use the jump starter for jump starting lead-acid batteries only. Do not use for charging dry-cell batteries that are commonly used with home appliances. These batteries may burst and cause injury to persons and damage to property.
7. NEVER charge or jump start a frozen battery.
8. To prevent arcing, NEVER allow clamps to touch together or to contact the same piece of metal.
9. Do not disassemble, bump, squeeze, puncture or penetrate the product.
10. Keep jump starter dry, clean and oil-free. Be sure to use a clean cloth when cleaning and do not use any corrosive solvent.

ADDITIONAL SAFETY INSTRUCTIONS JUMP STARTER

1. Read all the instructions before using the product.
2. To reduce the risk of injury, close supervision is necessary when the product is used near children. This equipment is not suitable for use in locations where children are likely to be present
3. Do not put fingers or hands into the product.
4. Use of an attachment not recommended or sold

12V Multifunction Jump Starter with LED Lights

EN

by power pack manufacturer may result in a risk of fire, electric shock, or injury to persons.

5. To reduce risk of damage to the electric plug and cord, pull the plug rather than the cord when disconnecting the power pack.
6. Do not use a battery pack or appliance that is damaged or modified. Damaged or modified batteries may exhibit unpredictable behavior resulting in fire, explosion or risk of injury.
7. Do not operate the power pack with a damaged cord or plug, or a damaged output cable.
8. Do not disassemble the power pack, take it to a qualified service person when service or repair is required. Incorrect reassembly may result in a risk of fire or electric shock.
9. To reduce the risk of electric shock, unplug the power pack from the outlet before attempting any instructed servicing.
10. **WARNING – RISK OF EXPLOSIVE GASES.**
 - a. **WORKING IN VICINITY OF A LEAD ACID BATTERY IS DANGEROUS. BATTERIES GENERATE EXPLOSIVE GASES DURING NORMAL BATTERY OPERATION. FOR THIS REASON, IT IS OF THE UTMOST IMPORTANCE THAT YOU FOLLOW THE INSTRUCTIONS EACH TIME YOU USE THE POWER PACK.**
 - b. To reduce risk of battery explosion, follow these instructions and those published by battery manufacturer and manufacturer of any equipment you intend to use in vicinity of the battery. Review cautionary marking on these products.
11. **PERSONAL PRECAUTIONS**
 - a. Consider having someone close enough by to come to your aid when you work near a lead-acid battery.
 - b. Have plenty of fresh water and soap nearby in case battery acid contacts skin, clothing, or eyes.
 - c. Wear complete eye protection and clothing protection. Avoid touching eyes while working near battery.
 - d. If battery acid contacts skin or clothing, wash immediately with soap and water. If acid enters eye, immediately flood eye with running cold water for at least 10 minutes and get medical attention immediately.
 - e. NEVER smoke or allow a spark or flame in vicinity of battery or engine.
 - f. Be extra cautious to reduce risk of dropping a metal tool onto battery. It might spark or short-circuit battery or other electrical part that may cause explosion.
 - g. Remove personal metal items such as rings, bracelets, necklaces, and watches when working with a lead-acid battery. A lead-acid battery can produce a short-circuit current high enough to weld a ring or the like to metal, causing a severe burn.
12. When charging the internal battery, work in a well ventilated area and do not restrict ventilation in any way.
13. Under abusive conditions, liquid may be ejected from the battery; avoid contact. If contact accidentally occurs, flush with water. If liquid contacts eyes, additionally seek medical help.

Liquid ejected from the battery may cause irritation or burns.

14. Do not expose a power pack to fire or excessive temperature. Exposure to fire or temperature above 130°C may cause explosion. The temperature of 130°C can be replaced by the temperature of 265°F.
15. Have servicing performed by a qualified repair person using only identical replacement parts. This will ensure that the safety of the product is maintained.
16. The battery terminal not connected to the chassis is to be connected first. The other connection is to be made to the chassis, remote from the battery and fuel line. The battery charger is then to be connected to the supply mains after charging, disconnect the battery charger from the supply mains. Then remove the chassis connection and then the battery connection.







SAFETY WARNINGS FOR BATTERY CELLS INSIDE THE TOOL





- a) **Do not dismantle, open or shred cells.**
- b) **Do not expose power tool to heat or fire. Avoid storage in direct sunlight.**
- c) **Do not short-circuit charging terminal. Do not store power tool haphazardly in a box or drawer where charging terminal may short-circuit each other or be short-circuited by conductive materials.** When power tool is not in use, keep it away from other metal objects, like paper clips, coins, keys, nails, screws or other small metal objects, that can make a connection from one charging terminal to another. Shorting the battery terminals together may cause burns or fire.
- d) **Do not remove power tool from its original packaging until required for use.**
- e) **Do not subject power tool to mechanical shock.**
- f) **In the event of battery leaking, do not allow the liquid to come in contact with the skin or eyes. If contact has been made, wash the affected area with copious amounts of water and seek medical advice.**
- g) **Observe the plus (+) and minus (-) marks on the equipment and ensure correct use.**
- h) **Keep power tool out of the reach of children.**
- i) **Seek medical advice immediately if a cell has been swallowed.**
- j) **Keep power tool clean and dry.**
- k) **Wipe the charging terminals with a clean dry cloth if they become dirty.**
- l) **Power tool need to be charged before use. Always use the correct charger and refer to the manufacturer's instructions or equipment manual for proper charging instructions.**
- m) **Do not leave power tool on prolonged charge when not in use.**
- n) **After extended periods of storage, it may be necessary to charge and discharge the power tool several times to obtain maximum**

performance.

- o) Battery gives its best performance when it is operated at normal room temperature (20 °C ± 5 °C).**
- p) When disposing of cells, keep cells of different electrochemical systems separate from each other.**
- q) Recharge only with the charger specified by Worx. Do not use any charger other than that specifically provided for use with the equipment. A charger that is suitable for one type of battery may create a risk of fire when used with another battery.**
- r) Retain the original product literature for future reference.**
- s) Dispose of properly.**

SYMBOLS

	To reduce the risk of injury, user must read instruction manual
	Warning
	Batteries may enter water cycle if disposed improperly, which can be hazardous for ecosystem. Do not dispose of waste batteries as unsorted municipal waste.
	Do not burn
	Do not stare at operating lamp
	WARNING – Hot Surface: Risk of Burns – Do Not Touch.

	Li-Ion battery This product has been marked with a symbol relating to 'separate collection' for all battery packs and battery pack. It will then be recycled or dismantled in order to reduce the impact on the environment. Battery packs can be hazardous for the environment and for human health since they contain hazardous substances.
	Read the operator's manual.
	Wear eye protection
	Waste electrical products must not be disposed of with household waste. Please recycle where facilities exist. Check with your local authorities or retailer for recycling advice.

COMPONENT LIST

1. **RED SIGNAL LIGHT**
2. **WORKING LIGHT**
3. **FLASHLIGHT**
4. **CHARGING PORT FOR EMERGENCY POWER SUPPLY**
5. **CHARGING PORT FOR MOBILE DEVICE**
6. **12V VEHICLE-MOUNTED EQUIPMENT POWER SUPPLY PORT**
7. **CAR IGNITION CLAMP PORT**
8. **ON/OFF SWITCH**
9. **CHARGE INDICATOR**
10. **CABLE CLAMP**
11. **USB CHARGING CABLE**
12. **CAR CHARGING CABLE**
13. **CARRY BAG ***

***Not all the accessories illustrated or described are included in standard delivery.**

TECHNICAL DATA

Type **WX852 WX852.X*** (852-designation of machinery, representative of multifunction Jump starter)

Battery capacity	12000 mAh
Battery type	Li-polymer battery
Battery voltage	11.1 V
Number of batteries	3
Rated input	5 V $\overline{\text{---}}$ 2.0 A
USB output 1/2	5 V $\overline{\text{---}}$ 1.0 A
Auto-start voltage	12 V
Auto-start peak current	500 A
Operating temperature	-17 °C-40 °C
Storage temperature	-20 °C-60 °C
Machine weight	1.05 lbs (475 g)

*X=1-999, A-Z, M1-M9 there are only used for different customers, there are no safe relevant changes between these models

We recommend that you purchase your accessories from the same store that sold you the tool. Refer to the accessory packaging for further details. Store personnel can assist you and offer advice.

OPERATING INSTRUCTIONS



NOTE: Before using the tool, read the instruction book carefully.

INTENDED USE

This product is a multifunctional device, combining emergency start-up of car battery, lighting, SOS warning, charging mobile devices, powering to 12V vehicle-mounted equipment five functions in one.

CAUTIONS

1. Just use the jump starter to start a 12V vehicle.
2. When use the jump starter to start a car, check the remaining capacity is at least 3 LEDs on and the machine is cool down.
3. Disconnect the clamp from jump starter and vehicle immediately after every start attempt. Do not use it to start the vehicle frequently. Each attempt allow at least 30s to rest.
4. Please charge the jump starter at least once a month and do not charge it when it is hot or immediately after each use.

5. Do not allow the metal teeth of the red clamp to touch the black clamp.
6. Keep the jump starter from children.
7. Do not disassemble the jump starter.
8. Do not insert foreign objects into any input or output ports.
9. Do not put the jump starter in extreme environment where the temperature and humidity is high.
10. If you find the jump starter inflates, please stop use and send it to the authorized service center.
11. The device shall be stored indoors and protected from the elements.
12. The unit shall not be charged outdoors.
13. When in use, steps should be taken to reduce the exposure to rain, sleet, snow, and the like.

1. CHARGING

NOTE: Upon initial use, your JUMP STARTER should be charged for a minimum of 4 hours.

CHARGE STATUS INDICATION

Press the Power Button one time to see the unit's state of charge. The unit's state of charge status is indicated by four LED indicators below the Power Button, as follows:

One LED on= Recharge Immediately

Two LEDs on= 25-50% Charge – Charge soon

Three LEDs on= 50-75% Charge – Charge if using as a jump starter

Four LEDs on= At or near full charge

NOTE: When starting up as a battery, it is recommended that the jump starter be in or near 100% charge state, at least three grids of charge.

CHARGING INSTRUCTIONS (SEE FIGURE A1)

1. Connect the pin jack to the jump starter through the input port.
2. Connect the USB power connector to the AC adapter.
3. Plug the AC adapter into the power supply.

CHARGING WITH THE CAR CHARGER (SEE FIGURE A2)

1. Connect the car charger and the car charging cable, then connect the jump starter through the cable.
2. Insert the car charger into 12V car receptacle.

NOTE: The LEDs will turn on successively to indicate charging progress. When all LEDs are lit solid, the unit has reached full charge.

2. STARTING THE VEHICLE

NOTE: When starting the vehicle, make sure that the unit is charged such that the unit's Status Display shows 3 LEDs when the Power Button is depressed.

- 1) Connect the clamp set to the vehicle ignition port. Be sure that the cable connection is fully engaged and secure. Upon connection, the clamp will then light a flashing blue LED, indicating the unit is in standby mode. (See Figure B1)
- 2) Turn ignition off before making vehicle connections.
- 3) Clamp the positive (red +) clamp to the positive terminal on the vehicle battery, and clamp the

12V Multifunction Jump Starter with LED Lights

EN

negative (black –) clamp to the negative terminal. Once connected, the clamp will turn on solid green. (See Figure B2)

NOTE: If you need to start more than once, pay attention to the unit's Status Display (at least 3 LEDs on).

If the unit lights on or beeps, check the **New Smart Cable Specification**.

NOTE: You have 10 seconds to start the vehicle (counting from the moment the clamps are connected correctly into the Jump Starter) or the unit will return to standby mode.

- 4) Start the vehicle (turn on the vehicle ignition).
NOTE: If the vehicle doesn't start within 6 seconds, let the jump starter cool for 3 minutes before attempting to start the vehicle again or you may damage the jump starter.
NOTE: During very cold conditions, the unit may not start on the first attempt. We suggest attempting to start a second or third time, as the starting attempt will warm the internal battery and improve your starting chances. Do not attempt to start after four attempts – either the unit does not have sufficient power to start the vehicle or there is a more extensive problem with the vehicle than simply a depleted battery.
- 5) When the vehicle is started, the smart cable/ clamp will show a solid blue LED and the warning buzzer will beep.
- 6) Disconnect the clamp from the vehicle.
- 7) Disconnect the clamp from the jump starter.

3. CHARGING MOBILE DEVICES (SEE FIGURE C)

- 1) Plug the USB charging cable into either the USB 1 or USB 2 charging port. You can charge up to 2 devices at a time.
- 2) Connect the charging cable to the mobile device
- 3) Press the power button to start charging

4. LIGHTING

The jump starter features several different work light modes through pressing on the power button for different times:

1. First Power Button press turns the unit ON, indicating the unit's state of charge.
2. Second press turns ON solid working light.
3. Third press turns ON solid red signal light.
4. Fourth press turns ON flashing red signal light.
5. Fifth press turns ON solid flashlight.
6. Sixth press turns ON flashing flashlight.
7. Seventh press turns entire unit OFF.

NOTE: While in any of the above work light modes, you can turn the unit OFF by pressing and holding the Power Button for four seconds. The power indicator will automatically turn off after 10 minutes.

TROUBLE SHOOTING

1. The indicator light does not show when charging the device
- 1) Check that the charging cable is actually connected to the device.

- 2) Check if the port is correctly connected.
2. Flashlight can't open
- 1) Check if the device has enough charge for use.
- 2) Check that it is used correctly.
3. Unresponsive when using the device
- 1) Charge the device, when charging, the light flashes.
- 2) If an emergency start is given to a car device with low battery capacity, the start is not valid due to the activation of the chip safety protection function. It can be reset by charging it to be reactivated.


MAINTENANCE AND STORAGE

Your tool requires no additional lubrication or maintenance. Never use water or chemical cleaners to clean your charger. Wipe clean with a dry cloth. Always store your charger in a dry place. Long time not used, it is recommended to maintain a certain capacity of the battery.

PRECAUTIONS

- 1) The applicable temperature for use -17 °C -60 °C
- 2) Avoid direct sunlight or humid conditions.
- 3) Avoid the switch being squeezed when placed.
- 4) If circuit protection is caused by plugging in high-power 12V vehicle equipment (current more than 8A), charge the emergency power supply to activate it.

ENVIRONMENTAL PROTECTION

 Waste electrical products must not be disposed of with household waste. Please recycle where facilities exist. Check with your local authorities or retailer for recycling advice.

DECLARATION OF CONFORMITY

We,
Positec Germany GmbH
Postfach 32 02 16, 50796 Cologne, Germany

Declare that the product
Description **Battery operated jump starter**
Type **WX852 WX852.X (852-designation of machinery, representative of multifunction Jump starter)**
Function **Start-up of car battery, lighting, SOS warning, charging mobile devices, powering to 12V vehicle-mounted**

Complies with the following Directives:
2014/30/EU
2011/65/EU&(EU)2015/863

Standards conform to
EN IEC 55015
EN 61547
EN 60598-1,
EN 60598-2-4,
EN 62493
EN 60335-1
EN 60335-2-29
EN 62233
EN 62368-1
EN 62741
EN 62778



2020/07/07
Allen Ding
Deputy Chief Engineer, Testing & Certification
Positec Technology (China) Co., Ltd
18, Dongwang Road, Suzhou Industrial
Park, Jiangsu 215123, P. R. China

DECLARATION OF CONFORMITY

We,
Positec (UK & Ireland) Ltd,
PO Box 6242, Newbury, RG14 9LT, UK

Declare that the product
Description **Battery operated jump starter**
Type **WX852 WX852.X (852-designation of machinery, representative of multifunction Jump starter)**
Function **Start-up of car battery, lighting, SOS warning, charging mobile devices, powering to 12V vehicle-mounted**

Complies with the following regulations:
Electrical Equipment (Safety) Regulations 2016
Electromagnetic Compatibility Regulations 2016
The Restriction of the Use of Certain Hazardous Substances in Electrical and Electronic Equipment Regulations

Standards conform to
BS EN IEC 55015, BS EN 61547, BS EN 60598-1, BS EN 60598-2-4, BS EN 62493, BS EN 60335-1, BS EN 60335-2-29, BS EN 62233, BS EN 62368-1, BS EN 62471, BS EN 62778

10



2020/07/07
Allen Ding
Deputy Chief Engineer, Testing & Certification
Positec Technology (China) Co., Ltd
18, Dongwang Road, Suzhou Industrial
Park, Jiangsu 215123, P. R. China

NEW SMART CABLE SPECIFICATION

Operations	Standards	LED Indicator
Low Voltage Protection	Lithium BV<10V+/-0.3V Vehicle BV<4.5V	Red LED Blink with Buzzer Shout;0.5s
Low Voltage Override Function	Vehicle BV: 2V - 4.5V	Push the button in 4s, the Green LED Solid Lighting.
Over Voltage Protection	Vehicle BV > 15V	Red LED Blink with Buzzer Shout;1s
Reverse Polarity	Reverse Polarity Protection	Red LED Blink with Buzzer Shout;0.1s
Short-circuit	Short-circuit Protection	Red LED Solid Lighting and Buzzer Shout in Rapidly
Reverse Charge Protection	Reverse Charge Protection	Blue LED Blink with Buzzer Shout, 0.5s
Smart cable connects to car battery first, then plugs into the jump starter	Work normally	Green, RED, BLUE LED Solid Lighting
Smart cable plugs into the jump starter	In Standby Mode	Blue LED Blink
Cable Right Connection	Work normally	Green LED Solid Lighting
Smart cable disconnects to the car battery	Automatic detection to the standby mode	Blue LED Blink
Jumping time limited	Maximum 60s, then shut down	After 60s, it will automatic protect. The Blue LED Blink with Buzzer Shout, 0.5s
Over-Temperature Protection	≥ 60° C, then shut down	RED LED blink with buzzer shouts twice (0.2s apart), after 1s gap, shouts twice again (ibid.), and so on



www.worx.com

Copyright © 2022, Positec. All Rights Reserved.
V1-UK-WX852 WX852.X-M-20220609